

# SPECIAL POPULATIONS

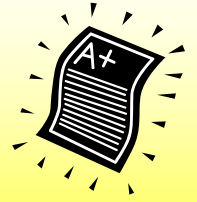
Counseling is an important component in the overall success of a student. The Special Populations Counselor provides personal, social, vocational, and academic counseling. The counselor is the main referral source for assisting instructors in making accommodations for individual student needs, as well as determining other support service needs.



“Serving Our Diverse Population”

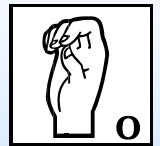
Come by the Special Populations Office if you have any of the following or other *disABILITIES*:

- ⇒ Hearing Impaired
- ⇒ Learning Disabled
- ⇒ Visually Impaired
- ⇒ Lymphatic Disorders
- ⇒ Neurological Disorders
- ⇒ Musculoskeletal
- ⇒ Cardiovascular



**Would you earn better grades or be more successful in school if you had one or more of the following?**

- ◆ Preferential Seating
- ◆ Taped Lectures
- ◆ Large Print Materials
- ◆ Audiobooks
- ◆ Kurzweil Software



**Do you need any of the following?**

- ◆ Testing outside of the classroom
- ◆ Sign Language Interpreter
- ◆ Oral testing
- ◆ Extended time on major tests



To be protected under the ADA, a disabled person must be “qualified.” The title II rules define qualified as a disabled person who, with or without reasonable accommodations, auxiliary aids, or removal of barriers, can meet the essential eligibility requirements to participate in a program or receive services offered by a public entity (§35.104).

Fayetteville Technical Community College does not practice nor condone discrimination in any form against students, employees, or applicants on the ground of race, color, national origin, religion, sex, age, disability, or political affiliation.

## Documentation Information

**Note:** Current documentation of your disability is required.

Documentation may be accepted from the following:

- Audiologist
- Division of Services for the Blind
- Counselor
- Mental Health
- Physician
- Psychologist/Therapist/Psychiatrist
- Division of Vocational Rehabilitation
- School Records (*i.e.* *I.E.P*)
- Other Referral Agencies

All documentation is **REQUIRED** to assess the need for requested accommodations and services.

**Please contact the office for additional details.**

**Tony Rand Student Center 143**